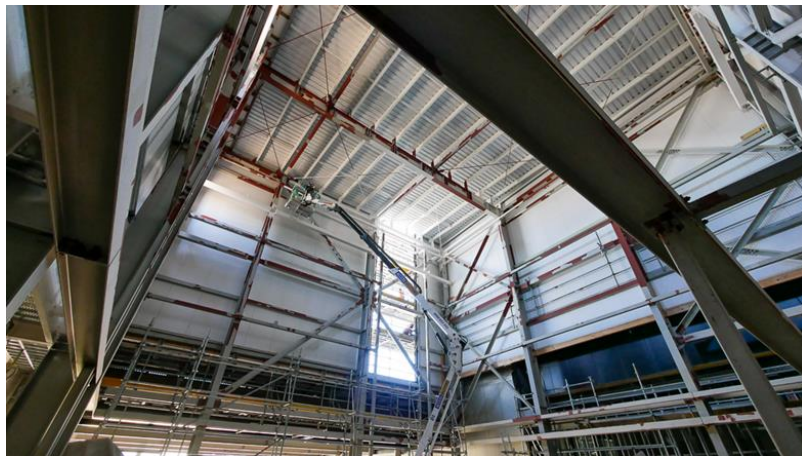




## Parakiore Recreation and Sport Centre

### Progress Update

February 2023





With the new year well underway, we are seeing some noticeable changes right across the site.

At the highest point of the building, now clad in black, sits the circo-arts studio. This is one of three studios that make up the MOVE centre that will cater for dance, dive-acrobatics and circo-arts training for young beginners through to professionals.

With the circo-arts studio almost weathertight, the 12-metre-high gantries are set to be installed in the circo-arts studio soon. This ability to easily access and alter the rigging points and apparatus will make the MOVE centre a one-of-a-kind training space in New Zealand.

As you will hear in [this video](#), incorporating circus and dance facilities into a sport and recreation centre is also a rarity globally. This reflects our desire for Parakiore to give as many people as possible the opportunity to get active.

Christchurch City Council has appointed Human Performance Incorporated (HPI), as the operator of the new MOVE centre. HPI has been awarded a \$492,000 grant from the Ministry for Culture and Heritage's regeneration fund to cover the organisation's establishment costs at the studio.



Over the pools a milestone has been reached with the first section of the award-winning birdcage scaffolding coming down, revealing the first section of the fabric ceiling.

The 4500m<sup>2</sup> ceiling is made up of 149 panels that have been constructed on the scaffolding platform and then hoisted into place. Each panel is made up of two PVC layers which not only create a striking flat surface but also a plenum that allows air to circulate and reduces the need for ducting.

Leisure pools are noisy places so the bottom layer of the ceiling is an acoustic mesh that will stop the sound reflecting off the surface.

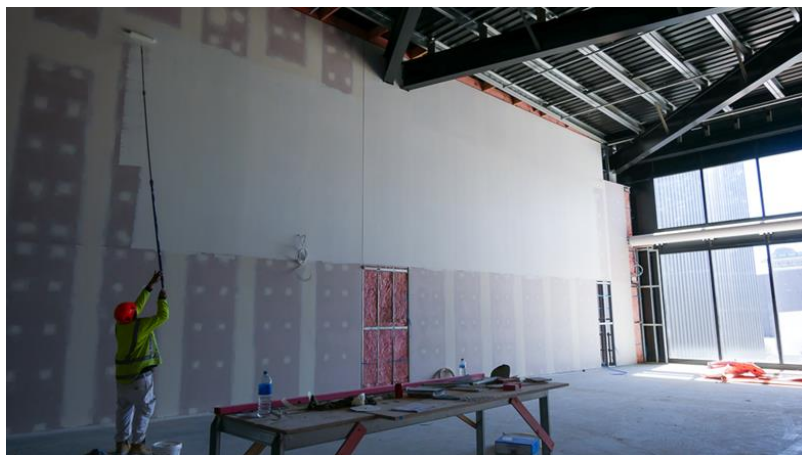
The removal of the scaffolding will allow work to continue on the installation of the pools in the leisure area.





At the southern end of the aquatics building, formwork is being constructed and reinforcing steel is being tied on the dive tower, ahead of the concrete pours for the three and five metre dive platforms.

It has been more than 20 years since a competition dive tower was constructed in New Zealand, so this is a unique piece of construction.



In the less exposed areas, we now have a large amount of the wall lining going on.

Above is part of the 700m2 fitness centre that overlooks the northern entrance and the leisure pools from the first floor.

Below you can see High Performance Sport New Zealand's training and administration space taking shape.



In our December update we told you about the jet grouting required to remediate some subsidence at the southern end of the site.

About three quarters of the in-ground columns that will further stabilise the land have now been installed. Once this work is complete and the remaining dive platforms have been poured, you will start to see the Moorhouse Ave end of the building being closed in.



One of the most noticeable changes you will soon see is the asphalt being poured for the first car park on the western side of the building. Once this is completed earthworks will continue on the St Asaph St entrance to the facility.

There will be around 550 car parks at Parakiore. You can see more about the layout in [this video](#).



Thank you for your continued interest in the Parakiore Recreation and Sport Centre. Please get in touch if you have any questions.

We look forward to updating you again in April.

If you are not the original recipient of this update and would like to subscribe please email [info@otakaroltd.co.nz](mailto:info@otakaroltd.co.nz)

For more information and updates on the Parakiore Recreation and Sport Centre and other Crown-led Anchor



Projects in Central Christchurch please  
visit [www.otakaroltd.co.nz](http://www.otakaroltd.co.nz) or follow us on



**Otakaro Limited**

info@otakaroltd.co.nz

03 357 6300

Level 8, Anthony Harper Tower, 62 Worcester Boulevard

Christchurch, 8013 - New Zealand

PO Box 73, Christchurch, 8140 - New Zealand



Otakaro Limited

[Preferences](#) | [Unsubscribe](#)