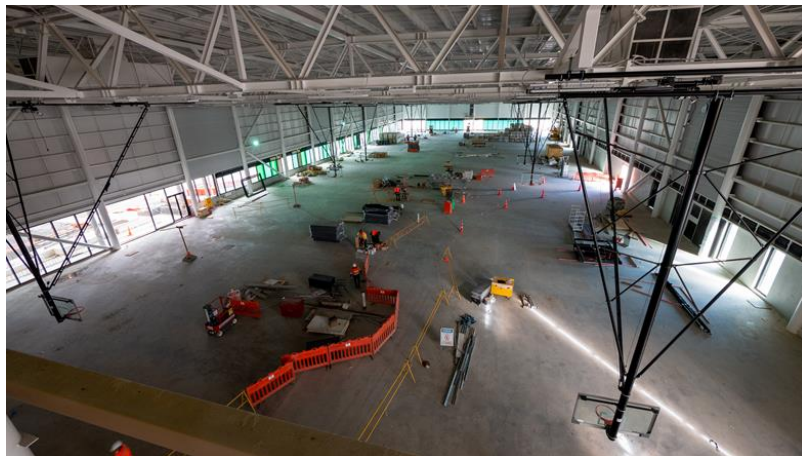




Parakiore Recreation and Sport Centre

Progress Update

April 2022



We are currently in the throes of installing the twelve retractable basketball hoops in the community court building at Parakiore. Seeing the hoops up in this huge, six-court space gives you a sense of how busy it will be.

You can see more of the installation process in [this video](#).

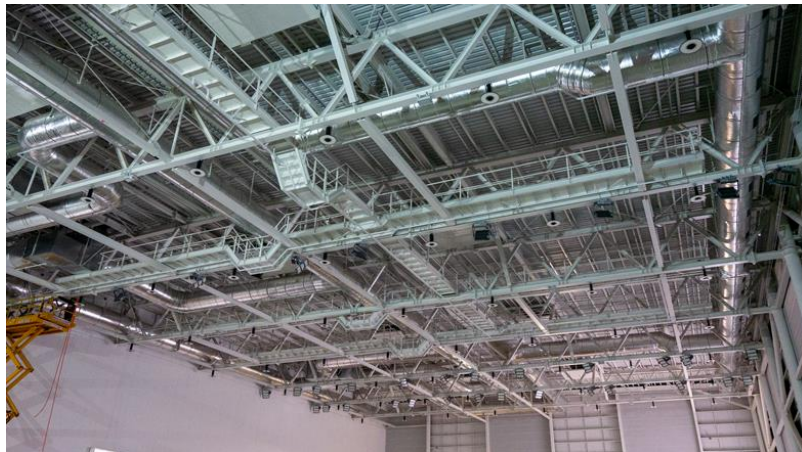
The basketball systems for the community courts come from Gared in the USA, the largest manufacturer of FIBA certified structurally mounted basketball systems in the world. FIBA is basketball's world governing body and has

approved these systems for level 2 international competition. This means Parakiore (along with MainPower Stadium in Rangiora) will have the only FIBA certified roof mounted basketball systems in New Zealand.

Many of the basketball systems and dividing curtains in the community courts are operated by a centralised controller. This means that the staff will be able to use a touch screen device to set up the facility in a fraction of the time compared to operating systems one at a time.

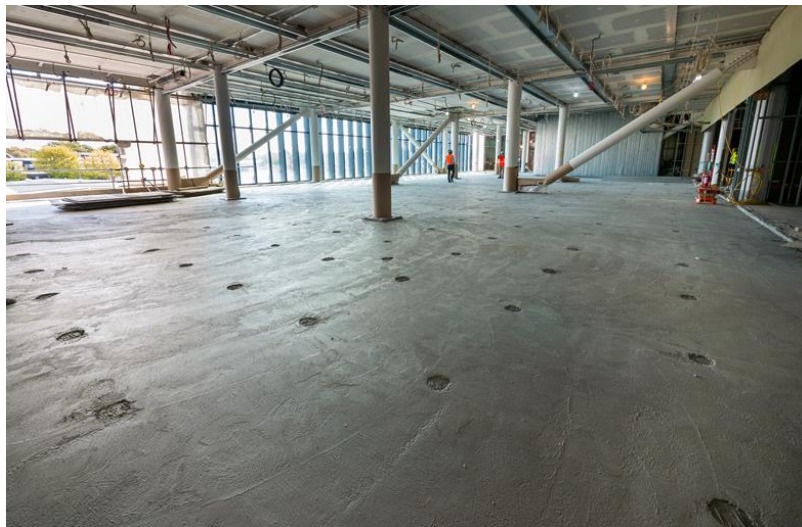
Much of the indoor sports equipment is being supplied by Sydney-based RMA Sport (which is owned by a proud Cantabrian) and we look forward to showing you more of it as it arrives on site, including the scoreboards that have been strength tested with a pneumatic cannon!

Down in the show court area, dozens of directional and static lights have been installed to ensure the facility meets the needs of both elite athletes and television broadcasters.



Above the lights, work to install the joint covers over the seismic gaps on the roof is also nearing completion.

Parakiore is effectively five separate structures with seismic gaps of up to 500mm in some places. The seismic gaps allow the different structures to move during a seismic event with less damage caused even if the structures moved in opposite directions.



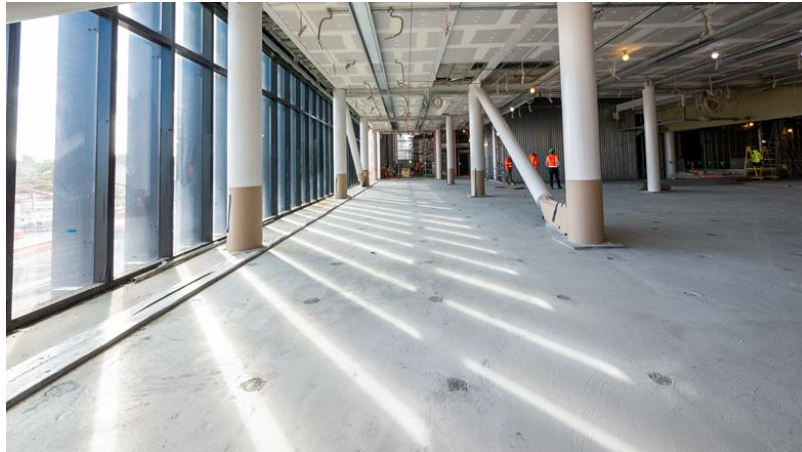
In the photo above you can see the huge 540m² dedicated gym space for High Performance Sport New Zealand.

This space is located on the second floor of the courts building and is expected to be a source of a fair bit of noise and vibration as our gifted athletes lift weights or make use of the throwing cages.

To prevent this noise and vibration from disrupting the experience for other people using Parakiore, the concrete floor has been poured in two layers which are then

separated to create an acoustic barrier. Each of the circles in the photos above and below is a jack that was placed within a layer of reinforcing before the top slab was poured. When cured, each jack will be gradually and precisely turned to lift the entire top slab around 50mm.

This same flooring system is being used in other areas, such as in parts of the public gym and the Performance Movement Centre



As mentioned in our previous update, like other large construction projects across the motu the main contractor and sub-contractors are experiencing significant challenges maintaining the optimal level of worker numbers on site in what is a very stretched construction sector. The easing of Trans-Tasman travel restrictions may provide some relief in this space, with the opportunity to bring in additional resources, but it is likely many months before this will impact the project.

Currently the main contractor expects to have construction of Parakiore completed in the latter part of 2023, and we will continue to keep you updated on the timeline through this regular email as the project progresses.



Thank you for your continued interest in the Parakiore Recreation and Sport Centre. Please get in touch if you have any questions.

We look forward to updating you again in June.

If you are not the original recipient of this update and would like to subscribe please email info@otakaroltd.co.nz

For more information and updates on the Parakiore Recreation and Sport Centre and other Crown-led Anchor Projects in Central Christchurch please visit www.otakaroltd.co.nz or follow us on



Otakaro Limited

info@otakaroltd.co.nz

03 357 6300

Level 8, Anthony Harper Tower, 62 Worcester Boulevard
Christchurch, 8013 - New Zealand
PO Box 73, Christchurch, 8140 - New Zealand



Otakaro Limited

[Preferences](#) | [Unsubscribe](#)