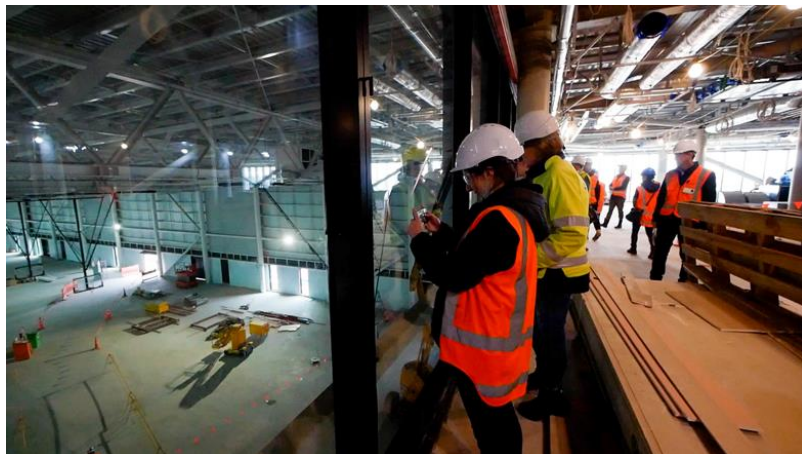




Parakiore Recreation and Sport Centre

Progress Update

June 2022



We recently had the opportunity to take sports groups and organisations from across the region and New Zealand around Parakiore Recreation and Sport Centre.

Restrictions on access due to COVID meant it had been about a year since many of these sports organisations had had the opportunity to visit the site. So, the changes for those making a repeat visit were pleasingly noticeable.

Take a look at some of what the groups saw in this [short video](#). We thought we'd use this month's update to share

with you the answers to some of the more frequent questions the groups threw at us.



Tell me about parking?

There will be about 550 car parks at Parakiore. Along the western side of the building (photo above) you will find a layout similar to an airport drop-off area. There will be a mix of P2 and P15 parks to enable easy pickup and drop off. Longer stay parks will be located at the Moorhouse Ave end and western side of the site, as well as a mix of mobility, EV and motorcycle parks adjacent to the entry.

On the south-western corner and southern side of the courts building there will be bus parking bays for school and team drop-offs.





How many permanent and temporary seats?

The competition pool has a permanent 1000-seat grandstand on the western side (photo above). Additionally, there is seating on the eastern and western concourses, increasing the capacity to 1350 seats. There's also capacity to bring in additional seats to cater for large national events as required

The show court, which has space for the equivalent of one full-sized futsal/handball/korfbal court, three netball/basketball courts or five volleyball size courts, is flanked by two 1250 seat electronic retractable grandstands. When fully extended, these grandstands cover the two outside courts to create one central court for premier events. Additional courtside VIP tables and seating can be added to the perimeter of the show courts, increasing seating capacity for up to 2571 spectators.

Over in the community court area, 15-seat, three tier mobile seating units will be available to be arranged to accommodate the activity going on.



What colour are the court line markings and are there blinds?

Blackout blinds will be available where required around the court spaces. There is a desire to have people be able to see into the community courts to encourage participation, but blinds will be available to cut out any glare.

The line markings will be:

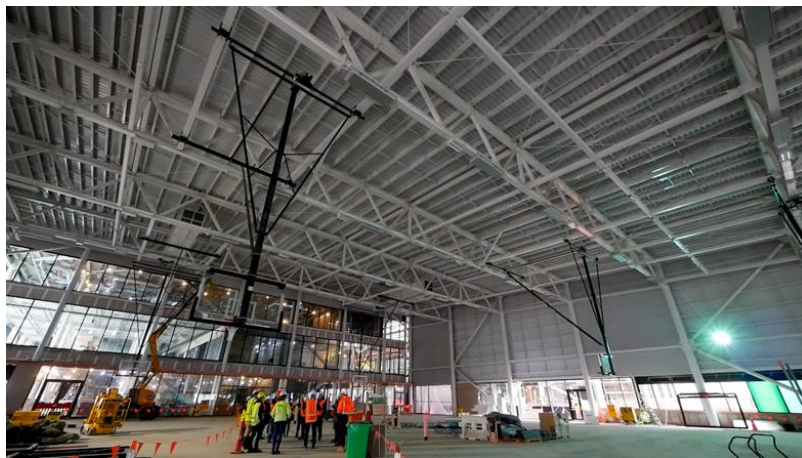
Badminton - yellow

Basketball - black

Netball - white

Volleyball - green

Futsal, Korfbal, Handball - blue



What are the ceiling heights over the courts?

The community court (photo above) has a minimum height of 8.3m, the minimum for netball. The show court has a clear height of 12.5m in the central court, which is the minimum height for international volleyball fixtures. Volleyball has the highest minimum height requirement of the sports that will be played at Parakiore.



What depth are the pools?

The leisure pool will have four areas, including a graduated beach entry toddlers pool, splash pad complete with mini waterslides, dump bucket and other activities suitable for children up to 10-years-old and a separate 0.9m deep zone to build water confidence. Beyond that there is a two-metre-deep pool for those older kids who enjoy a manu.

The leisure and competition pool areas are separated by a glazed wall to reduce noise transference. The 50m competition pool is 2.2m deep. At one end, extending to 15m, there will be a moveable floor which can be set to any depth up to 2.2m, allowing the pool to accommodate school swim lessons or international competitions .

To the south of the competition pool is the five-metre-deep dive well. At 20m x 25m, this pool will also serve as a warmup pool for swimmers and polo players, a scuba diving training area, synchronised swimming, aqua group fitness classes and water safety training.

The warm water pool will be ideal for aquatic programmes and classes, including exercise and rehabilitation, and will vary in depth from 0.9m to 1.4m. The learn-to-swim pool depth varies from 0.9m to 1m. The three spa pools are also 0.9m to 1m deep.

The aquatic sensory pool has a graduated beach entry leading to a 0.9m depth.



When will Parakiore open?

We expect to have construction completed late next year, which will be followed by Council's commissioning period before opening. While we're not in a position yet to provide a exact opening date, particularly given the volatility we're seeing in the construction and labour markets, we'll continue to keep you updated.



Thank you for your continued interest in the Parakiore Recreation and Sport Centre. Please get in touch if you have any questions.

We look forward to updating you again in August.

If you are not the original recipient of this update and would like to subscribe please email

info@otakaroltd.co.nz

For more information and updates on the Parakiore Recreation and Sport Centre and other Crown-led Anchor Projects in Central Christchurch please visit www.otakaroltd.co.nz or follow us on



Otakaro Limited

info@otakaroltd.co.nz

03 357 6300

Level 8, Anthony Harper Tower, 62 Worcester Boulevard
Christchurch, 8013 - New Zealand

PO Box 73, Christchurch, 8140 - New Zealand



Otakaro Limited

[Preferences](#) | [Unsubscribe](#)